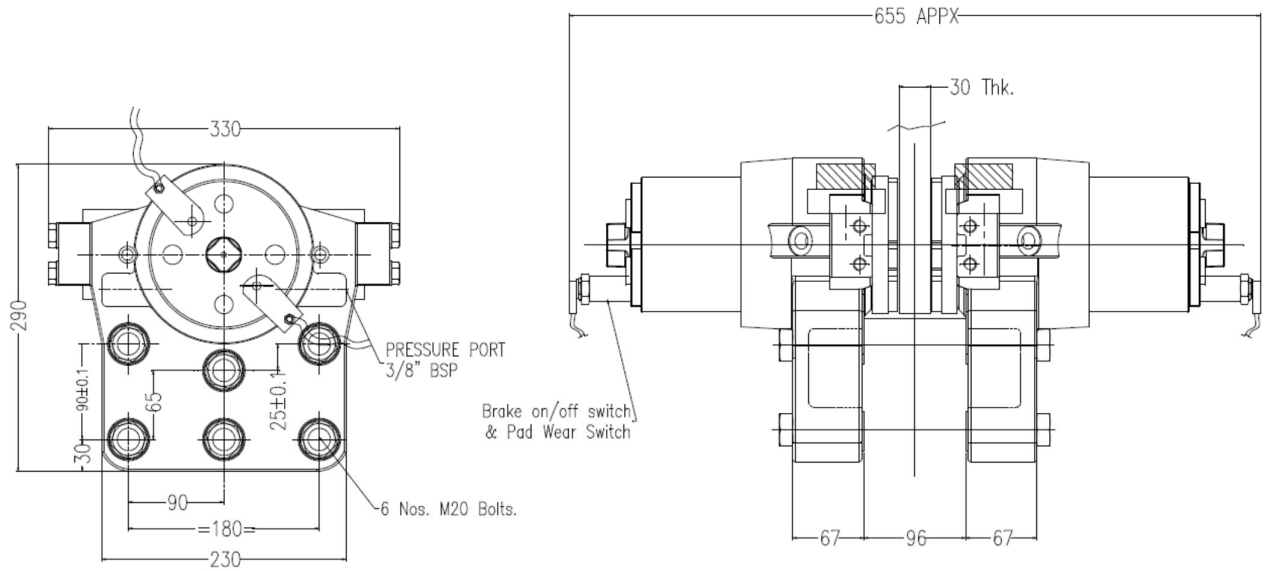


K-DAF/070-DS (HYDRAULIC FAIL SAFE DISC BRAKE).

Drawing No: 8402.04.003



BRAKE EXPLANATION – K-DAF/070-DS

- K = Kateel
- D = Direct
- A = Acting
- F = Fail-safe brake
- 070 = Clamping force – 070=1,40,000 N
- DS = Dual Spring

CALCULATION

$$FB = FC \times 2 \times \mu$$

$$M_B = a \times F_B \times \frac{(D_0 - 0.13)}{2}$$

MB = Braking torque (Nm)

a = Number of calipers acting on the disc

FB = Braking force according to table (N)

D0 = Braking disc outer diameter (m)

μ (Co-efficient of friction) = 0.4

0.13= Brake pad width (m)

COMMON FEATURES

- Weight : ~ 120 kg
 - Brake pad width: 130 mm
 - Area per brake pad: 20,000 mm² – sintered material
 - Max. wear of each brake pad: 5 mm
 - Total piston area: 138.2 cm²
 - Oil volume - 1mm stroke: 13.8 cm³
 - Pressure connection port: 2 ports – 3/8" B.S.P.
 - Drain connection port: 2 ports – 1/8" B.S.P.
 - Min. recommended pipe size: 10/8 - Ø10 mm (OD) Ø8mm(ID)
 - Max. operating pressure: 230 bar
 - Temperature range: -20°C to +80°C
 - Min Outer Disc Diameter: 500mm
 - Max. Outer Coupling Diameter: 300mm
 - Disc thickness: 20 mm – 50 mm
- The K-DAF/070-DS is a spring applied and hydraulically released fail safe disc brake with a clamping force up to 1,40,000 N.

Brake type	Max. Clamping force		Fb Braking Force		Operating pressure
	1mm Air Gap	2mm Air Gap	1mm Air Gap	2mm Air Gap	
K-DAF/010-DS	20000 N	17000 N	16000 N	13600 N	25 bar
K-DAF/020-DS	40000 N	34000 N	32000 N	27200 N	50 bar
K-DAF/030-DS	60000 N	51000 N	48000 N	40800 N	70 bar
K-DAF/040-DS	80000 N	68000 N	64000 N	54400 N	90 bar
K-DAF/050-DS	100000 N	85000 N	80000 N	68000 N	110 bar
K-DAF/060-DS	120000 N	102000 N	96000 N	81600 N	130 bar
K-DAF/070-DS	140000 N	119000 N	112000 N	95200 N	150 bar

K-DAF-070-DS -DUAL SPRING

1. Few moving parts – enable short response time and fast braking.
2. Mounting is very easy due to that reduced installation costs.
3. Replacement of brake pad is easy with removable brake pad holder.
4. Retraction springs for automatic retraction, when the brake is withdrawn.
5. Drain ports for any hydraulic oil leakage.

FEATURES

1. Brake ON/OFF and pad wear switches.
2. Sintered / Organic brake pads.
3. Hydraulic power pack to operate the brake.