

Hydraulic Active Disc Brake Caliper

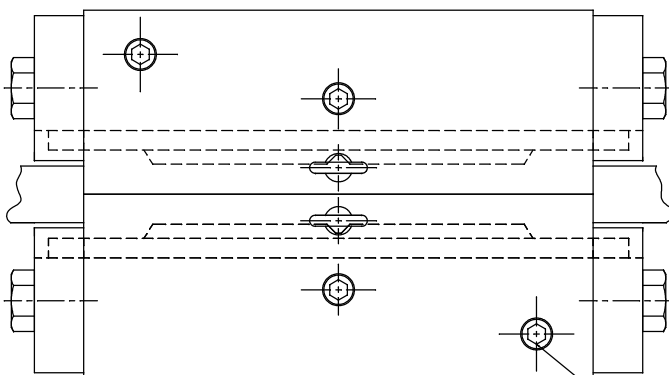
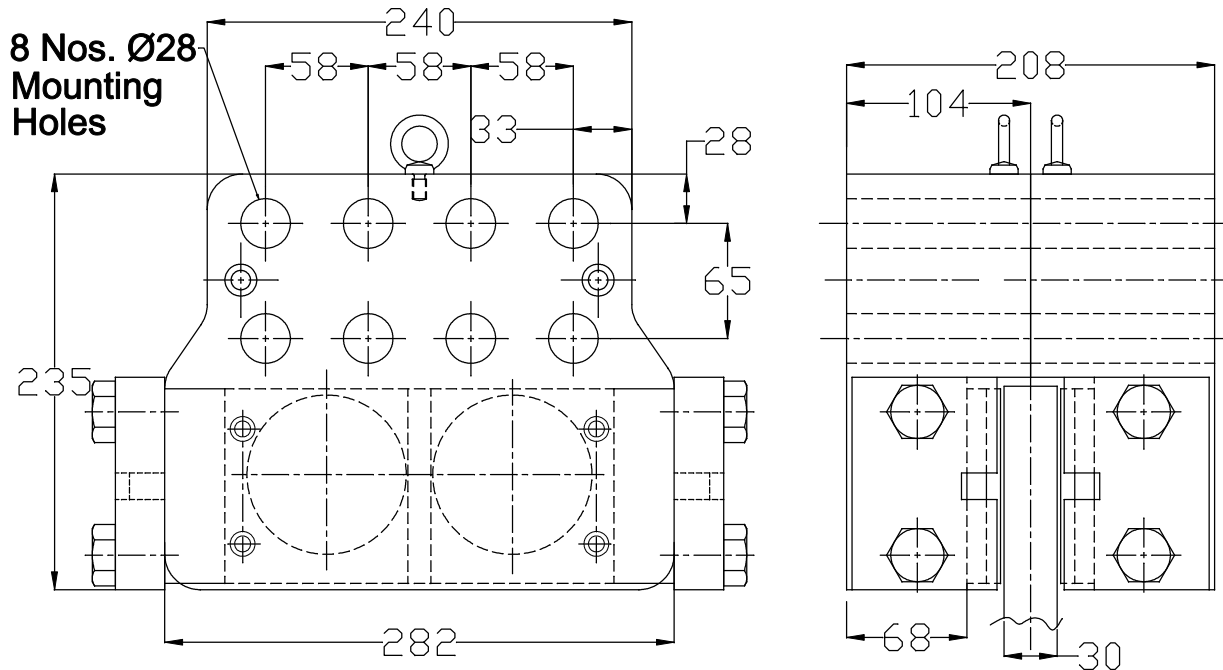
MODEL:

Data Sheet No.

Hydraulically Applied - Spring Released

KL-HA-90x2WW

8402.03.015



1/4" BSP PRESSURE PORT

Note: Design & data is subjected to change due to continuous product development

| | | | |
|---------------------------------------|--------|--------------------------------------|--------|
| Pad Width - mm | 110 | Min. Clamping Force (Fc-min.)- N | |
| Pad Area - sq.mm | 48,400 | Max. Clamping Force - N (Fc-max.) | 200000 |
| Max. allowable wear of brake pad - mm | 5 | Min. Braking Force (Fb-min.)- N | |
| Nominal co-efficient of friction - mu | 0.4 | Max. Braking Force (Fb-max.)- N | 160000 |
| Max. Air Gap - mm | 1 | Operating Pressure normal/max. - bar | 160 |
| Weight - kg. | | Air / Oil Consumption - cc | |



KATEEL Engineering Industry Private Limited

19/20, R.Bhadrapa Estate, Kamakshipalya, Magadi Main Road,
Bangalore - 560079
INDIA.

Ph: +91-80-3481305, 3484179 Fax: +91-80-3481305, 3218044
email: info@kateel.com, kateel@blr.vsnl.net.in web:www.kateel.com

| | |
|-------|----------|
| ISSUE | 01 |
| DATE | 16.03.10 |